



# Highland Art Center

## 2009 News Letter

Issue 1

### The Magic of our Members



Beyond the beautiful Victorian house and grounds, and more priceless than the art that is displayed on the walls and shelves of our gallery, are the people that make the Snyder Highland Foundation - Highland Art Center a family.

You are the reason we exist! Without you, our work would be meaningless. Your support of our mission to provide a showcase for the talented artists of our community and beyond gives life to the arts in Trinity County. Your appreciation of how fine art enriches our community is a testament to the high ideals that mankind can dream and achieve. You help to bring beauty and creativity to our society.

Thank you, members, for all that you accomplish! We have many amazing volunteers who selflessly give of their time and donations. Those wonderful delicious plates of snacks that you nibble on at Art Cruise openings are provided by generous members. They take that little extra time to make the Cruise a success. We could not put out a spread like that without our volunteers.

Your newsletters are edited, assembled and labeled by a team who gives many hours during the year to bring you this publication. Several members periodically assist our director in preparing shows and displays for you. Another team helped paint our picket fence not too long ago. Some even brought their children with them and gave the gift of example to their kids by showing how caring people take action in a united town. The results are simply magical!

Each month we publish the names of our treasured volunteers who have participated in the last three months. We honor them to let them know how grateful we are to their spirit of giving. We hope you take a moment to acknowledge them also. In fact you may even be on the list soon! Every gift is precious to the Highland and none go unnoticed! You are fantastic!

# Marge and Monet



Marge Heilman stands in front of Monet's house in Giverny, France.

Imagine, walking through **Claude Monet's** magnificent garden in Giverny, France. In the water garden, you view the famous Japanese bridge covered with wisterias and weeping willows. You touch your brush to your canvas and paint from the same flower-reflected watery inspiration that transformed

Monet's paintings into light and color! The atmospheric mist and flowery smells envelope you and the spirit of Monet climbs into your head.

**Marge Heilman** took this rare and magical journey from June 16<sup>th</sup> to July 18<sup>th</sup>, 2008. She joined six other artists at an artists' retreat in Fontaine, France. **Kippi Hammond**, a North Carolinian, runs the retreat along with Kippi's partner, **Jerome**, who acts as a guide and interpreter. Fontaine is in the southeastern area of France. The town nestles in the 'breadbasket of France' where wheat, sugarbeets, poppies and sunflowers are grown in abundance.

During this first phase of the retreat, the artists traveled in a van, exploring the countryside where every town has a church. Marge loved the 'Brocante Days' a market day that featured yard sales, farmers' markets, and vendors who sold local food, linens and antiques. She had packed very carefully, filling her backpack with art supplies and her camera bag. She totes brushes, watercolor paper, linen canvas, pastels, watercolors and water-soluble oils.

Marge found the French people to be wonderfully gracious and communicative. The older people were still appreciative of the Liberation of France by the Americans in World War II. Every so often there was a stone marker to honor the American troops who had marched through the countryside during those nightmare days. Many of the residents of this beautiful region actually live and work in the cities during the week and have weekend homes in the country where they commute to relax.

cont. pg.3

The group traveled to Giverny during the second week. The village lies 50 miles northwest of Paris. A mile away from Giverny was a charming Bed and Breakfast where they lodged. Many years ago, in the 1880's, Monet looked out the window of a train that he was riding in. He saw the little village of Giverny and made up his mind to move there. He rented a house and eventually bought it and the land surrounding it. He then set out to create his magnificent gardens which have become immortalized in his paintings.

Marge learned that during Monet's time, many North American artists came to Giverny to learn about the impressionist movement from Monet. It was these American artists who were the greatest supporters of the impressionistic movement as the Europeans were less enthusiastic about giving up the traditional way of painting. **John Singer Sargent, Thomas Eakins and Mary Cassatt** were among the great fans of Monet, who became the 'Father of Impressionism.'

The **Hotel Baudy** was built in the heyday of Monet's time to accommodate the many visiting artists who flocked to Giverny. It became the center of artistic life. It is now a café and restaurant with period decoration.

The retreat would not have been complete without visiting Paris. The **Museum d'Orsay** is located in the center of Paris on the banks of the Seine River. It had an extensive collection of Monet's paintings which included landscapes, portraits, and still-lives.

The **Museum de l'Orangerie** is also on the bank of the Seine and houses the collection of waterlily paintings known as the 'Nymphs.' These are monumental panoramic murals that wrap around an oval room under a glass roof. The murals were originally painted in Giverny but were donated to the people of France soon after the armistice in 1918. This was Monet's effort to create a 'Spirit of Renewal' for his country after the terrible war.

Marge returned to Trinity County commenting, "The experience was transformative for me!" She speaks of each magic moment with passion.

We are honored to present Marge Heilman as our featured artist at her 'Impressions' show from April 4<sup>th</sup> to 26<sup>th</sup>. Marge will use the inspiration that she gathered while on this enchanting journey to create the paintings for her show. "I am trying to imagine that if Monet were here in Trinity County, what his reaction would be to the light here, and how would he paint it" she stated. This is a show that you will not want to miss!

Marge will also conduct a Plein-Air Workshop on April 18<sup>th</sup> in the Highland Art Center's garden! Interested artists should contact the Highland Art Center at 623-5111 to reserve space.

# Celebrating the Holidays

Train Town was a project that had unexpected delights! When the completed parcels of land started coming in near the due date, we were amazed. The creativity of the artists who put each parcel together produced an enchanted land for the train to circle around. The parcels seemed to merge together to make a whole even though each artist was working independently.



Kimberly Piazza, right, is deep in conversation with Trish Miller and Allison Smith at the Mountain Magic Open House celebration.

**Yvonne Pegoraro**, our Director, designed a large oval base on foam core and cut out each of eight parcels with a utility knife. It was up to the artists to choose the theme and, wow, did they do it!

**Holly Webster**, a Hayfork High student, designed rolling pastures with cut-out lettering that spelled positive sayings. The words became little caterpillar-like creatures and a palm tree. She added a rock-lined blue stream through her property.

**Lesley Parkin**, who is from Great Britain, could not resist creating a typical English Village. She built a faux stone church, complete with tower and stained glass windows. Surrounding it was a rock wall such as you see in England. Next to it was a little cemetery with tiny grave markers. A thatched roof pub was named The Swan. Behind it was a little fenced pasture with a cow. Miniature rock paths meandered through the village and a red British phone booth stood next to the pasture.

**Jean Weese**, who is also from England, loves horses. She chose to build a mountain which she painted to mimic variegated granite. She added patches of stippled green paint for moss, a few trees, some logs and stumps. At the base of her mountain was a small cave with a bear inside. She populated her mountain with horses, burros, squirrels, rabbits, fawns, a fox, a dog, and an eagle perched high on the stump.

**Karen Hammer**, who is on the Weaverville Beautification team, designed the actual gateway entrance that will eventually greet visitors to Weaverville. Karen turned her parcel into a little landscape with modeled figures representing an artist, a camper, a gold panner, a fisherman, a hiker, and a kayaker. She built a log

cabin and created a little replica of her gateway out of metal. It says: 'Welcome to Weaverville.' She made her pine trees out of green foam and also had a little river running through.

**Ruth Wilson** used Sasquatch as her theme for 'The Land of the Bigfoot.' She took various cuttings from foliage such as pine, weeds, moss, pebbles, rocks and old man's beard to make a forestscape. There was a rock cave and a small cottage with a bark roof. Her Sasquatch creatures were elusive, but there were three of them hiding in the forest.

**Kimberly Piazza** and **Paula and Larry Masterman** built the Trinity ArtCycle. The actual Trinity ArtCycle is a future project that Kimberly is leading. It will be a storefront that accepts any material that can be re-used for creative projects such as school art classes. The group designed a store with little bins of reusable items outside.

**Yvonne Pegoraro** and **Hawk** constructed a mountain in the center parcel. They built a little light-blinking space ship with tiny spacemen inside.

The smallest parcel was Graffiti Alley, a narrow sliver painted with the backs of old buildings covered with graffiti. A little dumpster shows a guy diving into the trash. This section was done by **Emily Cole**.

Our train and signal was loaned by **Lew Wood** from Lewiston. He is an avid train collector. Thank you, Lew!

The 25-cent votes from visitors to the show came to a total of \$450.00. The funds will be donated to the Human Resources Network shoe fund for children to purchase shoes for school.

Cash prizes funded by Snyder Highland Foundation were awarded to the three top winners by public voting.



From the left, Paula Masterman and Kimberly Piazza, first place for Trinity ArtCycle. Ruth Wilson, third place for Land of the Bigfoot. Jerry Cousins, HRN Director, accepts check in behalf of Human Resources Network for their childrens' shoe fund.

Holly Webster, second place for Positive Words was unavailable for this presentation opportunity.

# Anniversary Show features a Tetro-Chagall



'Bouquet sur la Ville'  
Tetrograph Lithograph

**Anthony Tetro** had sterling talent! He was brilliantly skilled at the forgery of lithographs and paintings by such famous artists as **Salvador Dali, Joan Miró, Hiro Yamagata, Rembrandt, Norman Rockwell** and **Marc Chagall**. Tetro became a celebrity of sorts as an anti-hero. His works were frequently passed off as legitimate art in galleries, auction houses and museums. He was known as one of the most skilled forgers of art works in America.

The law eventually caught up with Mr. Tetro and he was brought to trial in Los Angeles during 1989. He was convicted of art forgery and finally released from jail in 1994. Tony now does private commissions of the masters for his clients by continuing to use his amazing talent within

the law at his Southern California studio. For example, Tony will paint you as the Mona Lisa. Check out his website at [tonytetro.com](http://tonytetro.com) for an impressive look at his gallery.

If you visited our January Anniversary Show, then you probably saw Tony's lithograph of Chagall that is part of Highland's permanent collection! Our Chagall was obtained as a donation by **Francis Cooksey** in 1996.

**Yvonne Pegoraro** brought out many pieces of art from Highland's permanent collection. Included were ten paintings by **Gilman Snyder** and two portraits of **Lucille Snyder-Finn** painted in her later years. The Snyders, of course, were the benefactors of our Highland Snyder Foundation and we are forever grateful to their generosity, which lives on.

'The Hill Man,' by **Hobart Brown**, a metal sculpture from Lucille's art collection, was also on display. Brown created works of art made from wire coat hangers and fencing. His work was also collected by **President Ronald Reagan** and **Johnny Carson**, among others.

cont. page 7



Mr. Brown was a resident of Humboldt County and became the founder of the **Kinetic Sculpture Race** in Ferndale in 1969. The race consisted of colorful decorated people-powered machines which traveled over land, sand and water for 38 miles on Memorial Day weekend.

Eventually, the race included international events in cities all over the world. He was nominated for the Nobel Peace Prize in 1999. Brown was also credited with the inspirational quote “Having more money does not insure happiness; people with ten million dollars are no happier than people with nine million dollars.” Mr. Brown passed away in 2007.

Attendees to this show were delighted to see many other works in the collection such as art by **Florence Morris**. A wonderful scrapbook full of history, news clippings, photos and other fascinating facts was shared by **Steve Hubbell**.

Left: 'The Hill Man' sculpture by Hobart Brown

## Mel Jackson returns in May

Many of you might remember **Mel Jackson's** last show that featured an installation made with tea bags. Well, Mel is coming back in May with a new show titled **'Pathway of Time and Space.'** Mel shared his thoughts with us in the following words:

*“As a boy, I only drew when I was asked. I was much more interested in carving wooden cars, rubber band guns, or bow and arrows. I would lay in the cool summer grass near my home in Etna and watch clouds form and disappear for hours. Their dark shadows moving across the heavily forested mountains of Scott Valley intrigued me.*

*The last hot days of late summer brought the musty odor of ragweed and juniper to my lungs. Our autumn table was banqueted with the flavors of venison and fresh apple pie. In the winter snow, I would turn my face upwards to feel the ephemeral touch of a light cool flake upon my cheek. Scott Valley was a palette, and my senses were the canvas. The mountains that ringed the Valley were sculptures of time and space.*

*Forty five years later the tops of those same mountains provide the inspiration for my latest work; a series of paintings of the Pacific Crest Trail as it passes through Lassen, Shasta, Trinity, and Siskiyou counties. I apply watercolor to paper taken from tea bags, which help me create an aged and fragile atmosphere to the pathways I have walked in Northern California. Along with Pacific Crest Trail paintings, I will display paintings of trails in Whiskeytown National Recreation Area, and hiking trails in Shasta County.”*

# 17th Annual Juried Photography Show

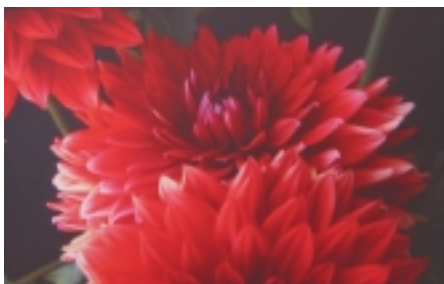


Fire on the Trinity  
by Robin Stocum

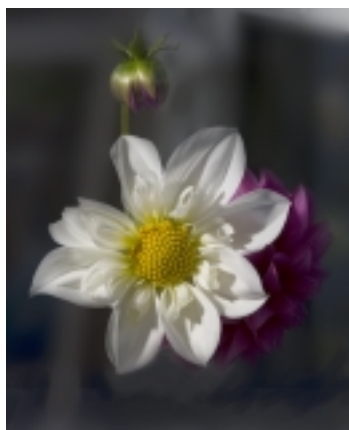


Reflection  
by Alexandra Watkins

*photos  
by Yvonne*



Summer Flame Dahlias  
by Carol Sands



Diaphonous  
by Lyn Relph

## Christmas Show

Right: Our Christmas Gift Shoppe designed and installed by Ruth Willson

Below: The English Village by Lesley Parkin



## Christmas Show *continued*

Below: Trinity ArtCycle  
by Kimberly Piazza and Paula Masterman



Above: View of the entire 'Train Town Project' in the main gallery of the Highland.

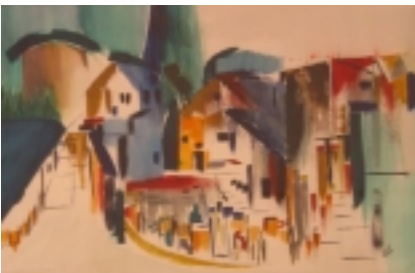
## 40th Anniversary Celebration *permanent collection*



'Lucille' oil on paper  
by Geer Morton



'Highland Art Center, snow scene' oil on canvas  
by Olive Hall Beattie



'Summer Impression' by Gil Snyder  
watercolor

'Child with Doll'  
by Janet Lane  
ceramic



# On the Trail of Carl Jung



Catherine Davidson rides the bus on the Legacy Tour of Switzerland.

Like a monastery perched on a mountain ledge, you feel suspended in space as you gaze out of the large window in **Catherine Davidson's** living room. The breathtaking view of the Trinity Alps invites meditation and inspiration. The rooms are tastefully filled with family photos, art, and treasures from many travels. This is clearly a home of grace and love. Catherine shared her personal history and recent journeys while we sipped sparkling pear juice prepared by her husband, **Ralph**.

In the late 1960's, Catherine was visiting some relatives in Argentina. She had graduated with a degree in Art History from Berkeley and had spent two years in Panama with the Peace Corps. "Mom," she said, "I think I would like to see some of the world!" Catherine packed her little red suitcase and boarded an Italian Cruise ship headed for Portugal from Argentina. She had a small inheritance of \$2500 from a great-aunt as well as a savings account from working in the Peace Corps.

Catherine was ahead of her time. It was still uncommon for young women to venture off for a solo journey halfway across of the world. Jeans had not yet become the fashion as casual attire and girls usually wore skirts at that time. She explored museums, art, culture, and architecture throughout Europe. She visited India, Nepal, and Macau, a Portuguese colony off of southern China. China was still off-limits to the rest of the world so she had to view it from a distance across the water. She went to Cambodia while the war was raging in Vietnam but had not yet spilled over into Cambodia. Catherine had primed herself with a love for discovery that would fill her life in the years to come.

Last summer, Pacifica Graduate Institute near Santa Barbara, where Catherine had received her PhD in Depth Psychology, offered a rare opportunity. Catherine could not resist the call of adventure! The Legacy Tour of Switzerland would take a group of travelers on a pilgrimage to follow the trail of Carl Jung, the father of analytical psychology. Jung became renowned for his

concept of ‘collective consciousness.’” Many of the sites they visited, such as Jung’s home and library, were not normally open to the public, so this was a special privilege. Catherine brought out a photo of Jung’s grandson, who now resides in the home. His resemblance to his grandfather was striking.

Particularly exciting to Catherine was the round tower at the village of **Bollingen** that Jung built. It was there that Jung retreated and said: “At Bollingen I am in the midst of my true life, I am most deeply myself.” Here he designed many mandalas as he sought to heal the rift in his heart that he had experienced with **Sigmund Freud**.

On the beautiful shore of Lake Maggiore near Ascona, Switzerland, is a large estate. **Eranos**, an intellectual discussion group, has gathered there annually since 1933. Catherine listened to many speakers at the symposium held there during the visit. She sat at the famous round table that Jung and his contemporaries occupied while they put their thoughts together years ago.

The **Shrine of Our Lady of Einsiedeln** is an important Catholic shrine and Benedictine monastery in the village of Einsiedeln, which is about 20 miles southeast of Zürich in Switzerland. The most important part of the basilica is the **Lady Chapel** where the **Black Madonna** statue, resplendent in rich robes and surrounded by gold clouds, is displayed. Catherine with her background of studies in religious mythology, found the church and the Madonna fascinating. She also visited Zürich’s **Grossmünster**, a 12th-century Romanesque ex-cathedral with an intriguing history of Catholic saints and Protestant preaching by the great protestant reformer, **Huldrych Zwingli**. Zwingli had no use for saints or relics. In 1524, he ordered all altar paintings and church treasures removed from the church. It has since been renovated and contains some artifacts.

Of all the church spires that pierce Zürich’s skyline, the slender, blue spire of **Fraumünster** (Minister of Our Lady) is the most graceful. It is best known for housing the magnificent five stained glass windows by **Marc Chagall** designed in 1970. The windows are nearly 33 feet high and each has its own color theme. Chagall may have used the colors symbolically, with blue and green representing the earth and red and yellow representing the heavens. Having viewed the windows, Catherine is now inspired to add the color green to her inspirational book, ‘The Alchemical Woman’ which is available at our Highland gallery. The book is featured in our ‘Book Show’ during February.

Catherine is off again on a trip to Texas for the birth of her second grandchild. She continues to teach as Adjunct Professor at National University in Redding and remains a very valued and creative member of the Highland Art Center.

Highland Art Center newsletter is written and composed by Barbara Edwards.  
Editors include Yvonne Pegoraro and Ruth Wilson. Photography by Yvonne Pegoraro.

# One art inspires another

Betty Pestoni received this letter and poem from an owner of one of her paintings!

October 24, 2008

To Betty Pestoni:

Greetings.

I am the proud owner of one of your watercolor paintings labeled "Trees." It is a beautiful and inspiring painting that I hang proudly in my living room.

I recently (January, 2008) finished my Masters of Fine Arts in Creative Writing, and my thesis was to write a collection of poetry. One of the poems I wrote, and included in my thesis, was inspired, and in fact, based on your painting. I have enclosed it for you.

Thanks for using your painting talent! It is an inspiration!

Sincerely,  
Josh Stevens

## "Trees"

These night woods  
ancient fingers stretching from graves of Spring  
for what life Winter skies afford.

Light gives way to shadow  
Shadow turns to sky

Sky to night and eternity  
shown through vast extremity branches  
weaving their labyrinthine arms  
into tapestries which pervade  
the realm of stars

Earth encompassing heaven

Sound of trampled silence echoes far  
quieting the doldrums of this mausoleum  
awaking the skeleton trees  
grass rustles, twig naps somewhere close

*continued on next page*

Night has crept upon us as a thief  
plundering our sacred fears of darkness;  
ghosts of dogwood encircle our path,

its whitened bark illuminating pathways to nowhere  
as sun's last call burns to ashes.

There, a light, amid the pitch of sky  
between the guardian trees it stands  
bringing us into yards of safety and familiarity  
where fears and death are remembered no more.

## Upcoming Workshops at the Highland

### Making and Using Herbal Remedies with SuZan La Berteaux

*Herbalist and Flower Essence Practitioner, SuZan La Berteaux will guide her students to learn about the medicinal benefits of herbs, their symbolism and many other uses. A series of classes will be held at SuZan's studio upstairs in the Highland building. SuZan has been studying and using herbs for over 20 years. Contact SuZan for further information at 623-4213 or email: mcgrath@snowcrest.net. Cost is \$25 per class. Class size is limited so register early. (All supplies will be provided)*

February 28 - **Bath Herbs and more**

March 28 - **Herbal Vinegars and Herbal Infusions**

April 25 - **Infused Herbal Oils, Tinctures and Glycerites**

May 23 - **Introduction to Flower Essences** (10am to 3pm)

### April 18<sup>th</sup> Plein-Air Workshop

*Join Marge Heilman in the Highland Art Center's garden as she instructs on techniques to lend oneself to the fleeting moments of light. Beginning to advanced students. Mediums: oil, watercolor & pastels. Time: 9:30 am to 4:30 pm. Cost \$50. Call 623-5111 for information.*

### Encaustic Workshop

*Anne Kinkade and Cathy Valentine will present another encaustic class in September. The exact date has not been set yet, but will be announced later. This workshop was very well received by students in the last class.*

# Volunteers make it happen!

November Art Cruise: **Buck Steel, Robin and Eileen Stocum, Carol Sands, Lyn Relp and Kate Hulbert, Edwin Lashley, Dan Cherry, Peggy Carr, Nancy Wallace, Judy and Sandy Morris, Joy Thompson.**

Mountain Magic Christmas and December Art Cruise: **Annette Westerman and the volunteers of Hospice.**

January Art Cruise: **Keith Crane, Joy Wiltsee, Diana Caris, and Barbara Edwards**

## Mailing Committee Volunteers

It takes many hours to sort and label our invitations and newsletters so that we can inform you of all our latest news!

**NEWSLETTER:** Our thanks go to **Pam Yearout** and her team of volunteers which include **Karen Hammer, Virginia Updegrave** and **Marge Guthrie**

**INVITATIONS:** **Hawk, Jack & Ruth Wilson**

**Ruth Wilson**, does a fabulous job of editing Barbara's mis-spellings and grammar errors on the newsletter. Thanks, Ruth!

## Gallery Display Volunteers

**Hawk and Ruth Wilson** for their assistance on decorating and hanging the Christmas Show!

---

## Upcoming Shows

**'Fiber Arts Show':** March 7th to 29th. Basketry, paper, bead-work, art quilts, and all other needle arts. Membership not required to participate. No entry fee. *Entry Deadline: March 3, 2009*

**'Impressions':** April 4th to 26th. Paintings by **Marge Heilman** inspired by her recent trip to experience Monet's world.

**'Pathway of Time and Space':** May 2nd to 31st. A series of painting by **Mel Jackson** of the Pacific Crest Trail as it passes through Lassen, Shasta, Trinity, and Siskiyou Counties.

## Unclaimed Dishes and Trays

Our pantry is filling up with a population explosion of serving trays and bowls from past art cruise food donations. Unless there is a name attached to the item, we often do not know who brought the item. Please, if you have left an item, stop by to pick it up. In July we plan to donate unclaimed items to the Blue Barn if they have been here for a lengthy period of time.

# The Peoples' Choice Award

'Storm Clouds over Point Reyes' by **Gene Knaebel** was the winner of the Peoples' Choice Award at the Annual Photography show!

Visitors to this show get to cast a vote for their favorite photograph. Gene's photo was a black and white picture of a beautiful sky filled with storm clouds over the coastal landscape of Point Reyes. His use of infrared photography creates a beautiful quality to these black and white photos.

Congratulations, Gene!

---

## Master Framer

Some of our permanent art treasures were in need of new framing and matting to be at their best for the January show.

Yvonne took them to **Sheri Cowan**, the owner of D'Milo Custom Framing in Court House Square in Weaverville. Sheri asked if she could use her own creative judgement in selecting the proper frames and mats.

The quality and beauty of the finished pieces was superb! A big thanks to Sheri for a beautiful job.

### HIGHLAND ART CENTER MEMBERSHIP FORM • JAN - DEC 2009

P.O. Box 1270 • Weaverville, CA 96093 • (530) 623-5111

\$20 Individual  \$35 Family  \$50 Sponsor or Organization  \$300 Life Member

The Highland Art Center is a nonprofit organization. Your membership helps defray operating costs and is tax deductible. Membership entitles you to a 10% discount on items purchased. Discount does not apply to organizations.

Name \_\_\_\_\_

Address \_\_\_\_\_ City \_\_\_\_\_ State \_\_\_\_\_ Zip \_\_\_\_\_

Phone \_\_\_\_\_ E-mail \_\_\_\_\_

Please check one or both if you would prefer to receive by **E-MAIL** the  
 **NEWSLETTER** and/or  monthly **INVITATION** (please include email address)

Would you be willing to occasionally bring refreshments for our receptions:  
 Yes  No

If you are an artist: Your media? \_\_\_\_\_

\_\_\_\_\_

For Art Center use:  
M/L  
Date